

Managing a Choice Activity

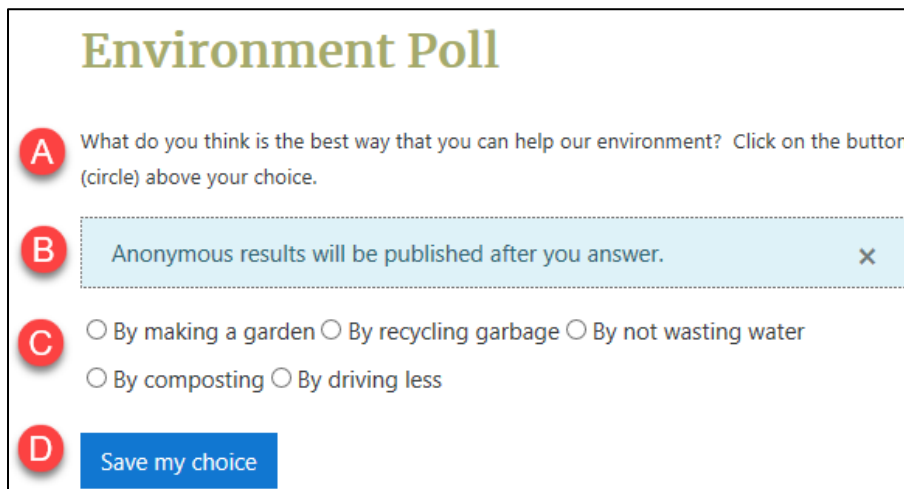
The **Choice** follows a simple premise. A teacher-generated question is presented to students with a group of responses. Students read the prompt and select one of the choices offered. It can be useful as an efficient means of stimulating thinking about an issue, to allow the class to vote on a direction for a course, or possibly to gather research data.

Exemplar

There are several **Choice** activities in the Stage 2/3 Exemplar Course. They are called: Reading, Job Interviews Poll, Job Search Poll, and Skills Assessment Poll.

What the student sees

- A. The choice question or prompt.
- B. The publishing setting. Depending on the teacher's settings, the student may then be able to see the results, either anonymously or with names (via the View xxx responses link) or not see anything.
- C. Several choices, each with a radio button. They click one to indicate their selection.
- D. The **Save my choice** button.



Environment Poll

A What do you think is the best way that you can help our environment? Click on the button (circle) above your choice.

B Anonymous results will be published after you answer. ×

C By making a garden By recycling garbage By not wasting water
 By composting By driving less

D

What the teacher sees

1. Regardless of how it has been set up for students, a teacher will always see learner's names and choices, via the **View 4 responses** link.

Environment Poll

[View 4 responses](#)

What do you think is the best way that you can help our environment? Click on the button (circle) above your choice.

Anonymous results will be published after you answer. ×

By making a garden
 By recycling garbage
 By not wasting water
 By composting
 By driving less

[Save my choice](#)

2. After clicking on the **View 4 responses** link, the teacher can see the choice results and can download the **Choice** data into three different formats for recording or printing purposes.

Responses

Choice options	By making a garden	By recycling garbage	By not wasting water	By composting	By driving less
Number of responses	0	3	1	0	0
Users who chose this option		<input type="checkbox"/> Ahmed <input type="checkbox"/> Ali <input type="checkbox"/> Lee <input type="checkbox"/> Chan <input type="checkbox"/> Eduardo Garcia	<input type="checkbox"/> Maria <input type="checkbox"/> Guptez		

Select all / Deselect all

With selected ▼

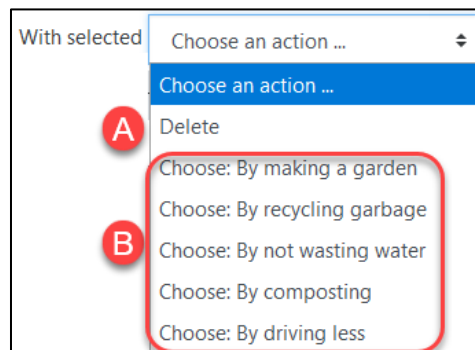
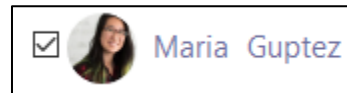
Download in ODS format

Download in Excel format

Download in text format

3. Checkboxes are available to the instructor to:

- A. **delete** any of the choices,
- B. change a **choice**.



Choice Help links

[Moodle Documents: Using Choice](https://docs.moodle.org/39/en/Using_Choice)

<https://docs.moodle.org/39/en/Using_Choice>

[Moodle Documents: Choice FAQ](https://docs.moodle.org/39/en/Choice_FAQ)

<https://docs.moodle.org/39/en/Choice_FAQ>